

CALENDAR HIGHLIGHTS

Tuesday, November 25

2025 Annual General Meeting

Sunday, December 14

**Club Christmas Party and
Presentation of Championship Trophies**

1st 2025 Event

The Shoalhaven Shuffle

Saturday, February 28

Turn the page to read about:

- President's Report
- Christmas Party Flyer
- January Hawaiian Night Flyer
- Shoalhaven Shuffle Update - Bulletin 2
- Canowindra Reliability Flyer
- Trophy Presentations – Ire of Man, Tour d'Course
- 2025 Alpine Classic
 - Report
 - Marked up Maps
 - Final Results
- Secretary's 2025 Annual Report
- Minutes of the October General Meeting
- 2025 Championship Point Score
- Conditional Registration Instructions

CRC meetings are usually held at the Canada Bay Club, 8 William Street, Fivedock at 7.30 pm sharp

Classic Rally Club Officers and Contacts 2025

Position Name	Email	Phone (please make calls before 9.00pm)
President: Alan Walker	crc.pres@classicrallyclub.com.au	0432 511 709
Secretary: Glenn Evans	crc.sec@classicrallyclub.com.au	0414 453 663
Treasurer: Peter Reed	crc.treas@classicrallyclub.com.au	0418 802 972
Membership: Glenn Evans	crc.mem@classicrallyclub.com.au	0414 453 663
Newsletter Editor: Chris McDonald	crc.editor@classicrallyclub.com.au	0419 255 032
Competition Secretary: TBA	crc.comp@classicrallyclub.com.au	
Championship Pointscorer: Martin Leaver		
Historic Vehicle Plates: Ron Cooper	crc.hvp@classicrallyclub.com.au	0403 037 137
Webmaster: Harriet Jordan	crc.wm@classicrallyclub.com.au	
C.A.M.S. Scrutineers	email/location	Phone (please make calls before 9.00pm)
Tim McGrath (Bronze)	tpmcgrath@bigpond.com.au	0419 587 887
John Henderson (Bronze)	Newport / Bathurst	0408 118 427
Tony Kanak (Bronze)	Eastwood	(02) 9858 2662 (H) or 0419 233 494
Gary Maher (Bronze)	North Richmond	(02) 4571 1229
Rob Panetta (Silver)	Killara (H) / Brookvale (W)	(02) 9939 2069 (W) or 0418 963 091
Jim Richardson (Bronze)	Baulkham Hills (H)	(02) 9639 0638 (H) or 0418 644 284
Glen Innes (Bronze)	Figtree	0409 293 241
R.M.S. Inspectors for Club Plate vehicles	email	Phone (please make calls before 9.00pm)
Tim McGrath	tpmcgrath@bigpond.com.au	0419 587 887
Peter Thomson		(02) 9419 5774

The Classic Rally Club Inc.



The Secretary,

P.O. Box 150,

Northmead, NSW 2150

Classic Rally Club Meetings are held on the 4th Tuesday of each month, January to November from 7.30pm at the Canada Bay Club, 8 William Street, Fivedock.

The opinions and advice provided in this newsletter do not necessarily represent those of the Classic Rally Club Inc. and its officers. No responsibility will be accepted for the opinions, advice and directions contained in this newsletter. Readers should rely on their own enquiries and make their own decisions.



NOVEMBER PRESIDENT'S REPORT

Wow, the November meeting brings the AGM and the Christmas party

follows on the 14th of December meaning 2025 is coming to a close and I can say that we had some really great events this year and it was fantastic to catch up with so many of you. We visited quite a few different regions and enjoyed what those areas had to offer. Each event full of its own character and always great to attend.

I can't quite believe it has been a full year in the role of President. As with all 'jobs' you get to the end of another year and do a quick reflection on how you did. Well I can quite happily say that I feel that with great help from not only the CRC committee, volunteers of the club, and of course my wife Lauren – that 2025 was a fairly successful year. Of course in a new role with a learning curve, it is a challenge to stay on top of it all. 2025 hasn't been an exception to this I'm sure there are a few areas that could have been done better, but what we have achieved has been a steady step forward, and best of all the committee is finalising an agenda for what our goals are in 2026. These include a major update to the club's management software, also creating access for those wishing to join our meetings on zoom – we have been in the testing phase (with the usual hiccups) however we are getting closer to enjoy the company of those a little further afield in a more seamless manner in 2026.

So there is still a lot of work to do, and if you'd love to get involved by all means we'd love to have you be part of it.

The past year has also had its fair share of sad moments too, the passing of several long term members who helped make the club what it is. It's always a shame. We are just very glad that they were a part of the CRC and our lives, enjoying many great times with us as they did. They will all certainly be remembered.

We are looking forward to kicking off 2026 with a bang.

January club night brings some light-hearted fun – so wear your favourite Hawaiian shirt or something with a bit of summer flair to keep the first meeting of the year a casual one.

February brings us the triumphant return of one of the best known rally directors – Tony Norman. After a short sabbatical from being a director, the itch got to great and Tony has very kindly put together the first event of 2026 – The Shoalhaven Sojourn, an event based in the South Coast region.

The event is being held on the 28th February (Saturday). A wonderful route has been planned and a nice lunch also provided within the entry fee. So by all means make sure this one is on your calendar and get your entries in early and start the year off the right way.

March (motorsport month) with the F1 GP, Phillip Island historics and the Adelaide Festival of Speed – this month has all the big international events in it. It also is the time of year that we can enjoy the next installment from Drivetek Motorsport. Jon Mansell has put together another great event that we are again looking forward to. So the end of March early April will be set aside for that one.

So 2026 is shaping up to be another great year, and will have even more on offer. So we would love to see you out there enjoying the social side with great friends, and best of all enjoying the drive.

From our family to yours, we wish you all a very happy and safe Christmas. Enjoy catching up with friends and family and we certainly look forward to catching up with you all next year to have some more fun out on the road.

Alan Walker
CRC President



YOU ARE INVITED TO THE CRC 2025

Christmas Party

Invitation is open to Current Members, Past Members and Families

Sunday 14th December

From 12 noon

BYO Drinks

Berkshire Park Community Centre

71-79 Sixth Road, Berkshire Park

RSVP to Alan Walker on
snakebite105@live.com.au
or text 0432 511 709





January Club Night Hawaiian Shirt Night

Come along and enjoy a fun and informal catch-up to kick off 2026. Enjoy the summer vibe with your Hawaiian shirt.

Reminder that many do enjoy dinner before in the club's restaurant.

Can't wait to see you all there.

Canada Bay Club
8 William St, Five Dock
Meeting starts 7:30PM



Classic Rally Club Inc.

THE SHOALHAVEN SOJOURN - SATURDAY 28 FEBRUARY

A ONE-DAY NAVIGATION ASSEMBLY TO BE RUN IN THE ILLAWARRA AREA.

- THIS WILL BE THE FIRST CLASSIC RALLY CLUB EVENT OF 2026 SO PLEASE PUT THE DATE ON YOUR MOBILE DEVICE OR DESK CALENDAR.
- THE EVENT WILL START AT THE HAYWARDS BAY HUNGRY JACK'S FACILITY LOCATED JUST TO THE NORTH OF THE ILLAWARRA REGIONAL AIRPORT. LUNCH WILL BE IN THE BOMADERRY / NORTH NOWRA AREA WITH THE FINISH AT THE WORRIGEE SPORTS CLUB ON GREENWELL POINT RD, SOUTH NOWRA.
- ROUTE INSTRUCTIONS FOR THE USUAL 3 CRC EVENT CATEGORIES WILL BE AVAILABLE TO SUIT ALL CREWS ABILITIES - BELIEVED OR PERCEIVED! TOTAL EVENT LENGTH WILL BE APPROX 300 - 320 KMS SUBJECT TO FINAL ROUTE CHECKING. IT IS EXPECTED THAT NO MORE THAN 2 KMS OF GRAVEL ROAD WILL NEED TO BE ENDURED. APOLOGIES TO OUR OFF-ROADERS.
- FURTHER DETAILS REGARDING EVENT ENTRY FEES WILL BE PROVIDED WHEN LUNCH ARRANGEMENTS ARE FINALISED BUT SHOULD BE IN THE USUAL RANGE OF USUAL CRC ONE-DAY EVENTS.
- BEING THE FIRST EVENT OF THE YEAR IT IS HOPED THAT WE CAN ATTRACT A GOOD NUMBER OF ENTRIES TO GET THE SEASON OFF TO A GOOD START.
- PLEASE CONTACT ME ON 0402 759 811 OR 02 4293 1574 - OR BY EMAIL AT normansoz@optusnet.com.au FOR FURTHER DETAILS.

TONY NORMAN - EVENT DIRECTOR (AND ETERNAL OPTIMIST!)



Classic Rally Club Inc.

THE SHOALHAVEN SOJOURN - SATURDAY 28 FEBRUARY

EVEN BULLETIN NO. 2 – ISSUE DATE : 25 NOVEMBER 2025

1. The Entry Fee for this Event will be \$130.00 for a crew of 2.
 - Note that this covers the cost of Lunch at \$35.00 per person.
2. The Lunch venue is the Bomaderry Bowling Club located on MERRO ROAD, Bomaderry. We will be located in the SUNRISE ROOM.
3. It will be a cold buffet spread - ideal for break in the mid-summer. Details of the buffet food are still to be finalised but there will be basic vegetarian options. The salads are very good - I've tried them!
4. You will be issued with LUNCH VOUCHERS with your documents issued at Registration. Please bring these with you to the buffet location - also have photo I.D. to sign in at Club Reception Desk.
5. I am hoping to get the Entry Form and Supplementary Regulations on the CRC website - classicroallyclub.com.au - by the end of November or early December, MA Approval has been received will be uploaded to the web site soon
I am hoping to get some entries in the bag before the traditional Aussie Xmas and New Year shutdown!

OTHER MATTERS

- I am pleased to advise the Edul Dhondy is acting as the Assistant Director for Event. He is giving up the chance to compete.
Thank you Edul.
- I have also had confirmation that Paul Morton and Garth Taylor will be assisting as Passage Control Officials. Thank you both.
- I am still looking for additional Control Officials etc. Please contact me on the number below if you can't enter but would like to help.

TONY NORMAN - EVENT DIRECTOR Mobile 0402 759 811.

CANOWINDRA

Reliability Trial

2026 Canowindra Reliability Trial is a 2 day event set to run across the NSW Great Dividing Range and onto the tableland areas and countryside surrounding Canowindra.

Tina & myself used our October long weekend break to complete the first recce run and it was a fantastic weekend away. We can tell you, that the scenery and views are nothing short of visually stunning. The roads we have selected will give drivers maximum driving pleasure as well as a test of their skills. The navigators will also have their skills tested during the weekend with our usual quick paced yet straight forward style of navigation across our usual three classes of competition.

The route has been carefully chosen to maximise the use of sealed roads with only a few short, unsealed sections each day. There are plenty of long open runs for crews to see the sights and enjoy the ride and as always we have found new roads to drive and new towns to visit along the way with some interesting inclusions added into the mix that will make it an exciting weekend of competition.

The event will start in a familiar area and after a few hours of sporting driving, we will overnight in the picturesque country town of Canowindra where we will socialise and dine at a popular local spot before getting some well-earned sleep.

The Sunday sections will again take crews through fabulous scenery on amazing roads to an early finish in Goulburn for some more socialising and refreshments before heading off home.

A firm date has not yet been organised for this event however we are hoping for a March/April date in 2026.

We're so excited about this event, we had to get some advanced information out to everyone. Keep your eye out for more information on this event as well as the 2026 Sheep Station Rally which will be a full tarmac event.

Regards

Jon Mansell

TROPHY PRESENTATION FOR
The Tour d'Course and The Ire of Man
Presented at the Alpine Classic dinner



Tour d'Course - Tour Equal 2nd Place
Driver - Glenn Evans
Navigator - Jen Navin
Presented by - Martin Leaver



Tour d'Course - Apprentice 3rd Place
Driver - Helen Oste
Navigator - Toby Oste
Presented by - Martin Leaver



Tour d'Course - Masters 1st Place
Driver - David Shaw
Navigator - Ray Arthurs
Presented by - Martin Leaver



Tour d'Course - Apprentice 2nd Place
Driver - Marina Thiveos
Navigator - Michael Brandt (Pictured)
Presented by - Martin Leaver



**Ire of Man - Tour 1st Place
Driver - Doug Barbour
Navigator - Xanthea Boardman
Presented by - Martin Leaver**



**Tour d'Course + Ire of Man - Masters 2nd Place
Driver - Edul Dhondy
Navigator - Alan Walker
Presented by - Martin Leaver**



**Ire of Man - Masters 1st Place
Driver - David Stephenson
Navigator - Michael Stephenson
Presented by - Martin Leaver**



**Tour d'Course - Masters 3rd Place
Driver - David Stephenson
Navigator - Michael Stephenson
Presented by - Martin Leaver**



**Ire of Man - Apprentice 1st Place
Driver - Rob Panetta
Navigator - Lauren Walker
Presented by - Martin Leaver**



**Ire of Man - Masters 3rd Place
Driver - Graham Pettit
Navigator - Phillip Stead
Presented by - Martin Leaver**

2025 Alpine Classic Report

The 25th Alpine Classic has been run and won.

We had some wonderful weather for the weekend, the countryside was in full bloom and in many areas a beautiful lush green, full of new growth and plenty of healthy livestock about. If you were observant enough you may well have seen anything from an emu to a camel! In all 37 crews took to Lithgow on Saturday morning to enjoy a little under 740kms over two days encompassing some truly great touring roads full of wide open scenic vistas.

The field of cars this year was certainly a mixed bag - with Porsche being the marquee of choice this year, certainly followed by a healthy mix of Alfa Romeos, and Mercedes to boot. Whatever the make and model of your car the road awaited just begging to be enjoyed, and that we did.

The usual mix of categories were in tow, with Masters let out first followed by Apprentices – both set to test their wits against the intended course, eager to find the correct roads within the supplied maps. Tour was let loose last and being the most hotly contested category they were keen to get amongst it.

PERMIT CHANGE

The main change this year - was due to permitting requirements the removal of the average (maintained) speed section. This is the time where crews work to sort out when and where they are required to be over a reasonably short section. However we managed to build in enough of a healthy challenge for all categories to balance the challenge to enjoyment and at times with the scenery and roads it tipped well to the later.

OFFICIALS

I can't thank enough the efforts of the officials - Lui for a massive help not only behind the scenes but all through the weekend. Len (Lui's right hand for the event) always keeping her on track from controls to scoring. Edul for carting me and the boards around all weekend in setup. All our controls (Eric and Jenny Young, John and Helen Young, Mick and Zed) & our sweep (Geoff and Trish Mills) an incredible effort assisting Glenn and Jen in the 928 with a flat late on Saturday, along with returning all our boards with the longest days out and about. Certainly last but not least Lauren - each year we think it will be easier, but we always find something to tweak. A huge effort and plenty of patience - it could not be done without her!

MASTERS / APPRENTICES

This year was again challenging in various ways, and as always striking that balance between time allowed, difficulty of instructions / plotting, the style amount and type of questions and the distances between them. On top of all of that, as an event, we are very fortunate that each and every crew across these categories are very good at what you do. I always try my hardest to get it right, and even this year you can get close, but it was acknowledged that the afternoon section on Saturday (2B) could have been adjusted to allow crews a little bit more assistance, this could have been through placement of boards, but also the location of questions. Some more ' bread crumbs' could well have made this section just that little bit less challenging, but dial up the enjoyment.

You may well have noted the counting question (Saltwater Creek), well without an average speed section we did have to give you a challenge. It did catch a couple of crews but again you all performed very well.

In some dialogue with one of the Masters navigators, it was put to me that they had found a shorter route to complete Section 3A on Sunday morning. Upon studying their review – I had to put my hand up and admit that it was shorter (just a couple of km's over a fairly lengthy stint) but none the less it was correct and shorter. This crew and there may have been others, did of course choose to perform the 'intended' route and managed to find all observations.

A perfect reminder on both sides that no matter how many times our instructions and maps are checked – the level of competition and education within the group is second to none. So I can only thank you for allowing and accepting the challenge we put forward each year, as over the last several years I do think we are really close to getting what we set out to do – provide an enjoyable rally with just the right mix of challenge.

TOUR

The Tour always has its challenges for us, as we have to balance how much time the Masters and Apprentices require against what the Tour needs without ending up at safely at controls too much before they are required. This year we may have been on the reserved side of timing. But with the great roads and scenery we hope you enjoyed the short breaks when you got them. I mean it probably wasn't too bad soaking in the sun and Carcoar Dam viewing platform before your required time was it....

The number one reason as to why the scoring gets inflated in this category is due to spelling, punctuation and Upper/Lower case. Punctuation including inverted commas and apostrophes all are part of the challenge. We hope some of the questions this year stood out and showed off some interesting sights along the route. It is a similar situation every year and unfortunately it is the steps that we have to take to separate the category, otherwise we would have a fields of clean sheets (this was introduced many years ago to give tour a challenge and ensure they are particular about question answers – it is either this or we could always introduce some mapping? Thoughts?).

As usual there is always a couple of questions that have the answers seem 'hard done by', 2025 seems not to be an exception. 9 letterboxes come to mind, and of course 25t GROSS are two leaders in this. As I mentioned on Saturday evening, even doing the setup we counted 8 letterboxes, however when we had several road cards showing up with 9, we chose (as the answer wasn't too far from the end of Saturday) to go back out and review it onsite again. So yes we again confirmed that there were 8 posts, but clearly 9 separate letterboxes. Each year we always try our hardest to uphold the fairest results. All the answers are discussed and the expected answers recorded for the scorers pre-event. But to have the highest record of fairness, in this instance we were fortunate enough to be able to confirm the answer, so very well done to those who recorded it correctly.

SEE YOU AGAIN NEXT YEAR

Time to thank all of the crews who came out, brought their special vehicle and teammate all with the hopes of an enjoyable weekend out touring, and doing what their car was intended for - Enjoyment! Without your support all the effort just would not be worth it, we learn every year and

we are hoping that is reflected in the quality and level of enjoyment we squeeze into the Alpine Classic.

I'd also like to thank all of those that have reached out and given us congratulations on a great event – either directly or through other social media, we did receive the messages and do truly appreciate them. It is a huge effort and we do appreciate your support and that we can all enjoy a great event together.

Time for a little breather before we start it all over again - can't wait to have you along for the ride again.

As always, get out there and Enjoy the Drive!

Alan Walker, Lauren Walker and Lui MacLennan,

Alpine Classic team

LITHGOW REGION 1/250,000

SATURDAY ALPINE '25

Legend

Dual carriageway; Distance in kilometres.....	
Principal road; Locality; Built-up area.....	
Secondary road; Bridge; Causeway.....	
Minor road (access & condition not assured).....	
Vehicle track (access & condition not assured).....	
Route marker: National, State.....	
Gate; Stock grid.....	
Embankment; Cutting.....	
Landing ground; Airport; Heliport.....	
Multiple track railway; Station or siding.....	
Single track railway; Bridge; Tunnel.....	
Powerline (110 kV and over).....	
Homestead; Building's; Ruin.....	
Chimney; Silo; Tower.....	
Fence; Levee; Open cut mine.....	
Mine; Windpump; Yard.....	
Contour with value; Depression contour.....	
Horizontal control point; Spot elevation.....	
Sand; Sand dunes.....	
Sand ridges; Pinnacle; Cliff.....	
Forest, wood or shrub land; Rainforest.....	
Plantation; Urban recreation peridend.....	
Orchard or vineyard; Windbreak.....	
Bore or well; Spring; Tank or small dam.....	
Watercourse (presence of water not implied).....	
Subject to inundation; Swamp.....	
Lake; Perennial, Non-perennial; Waterhole.....	
Wreck; Submerged, bare or awash.....	
Foreshore flat; Lighthouse.....	
Shoal; Tidal ledge or reef; Mangrove.....	
Rock; Submerged, bare or awash; Breakwater.....	
Jetty or pier; Wharf; Saline coastal flat.....	
State or Territory border.....	
Reserved area boundary.....	
Prohibited area boundary.....	



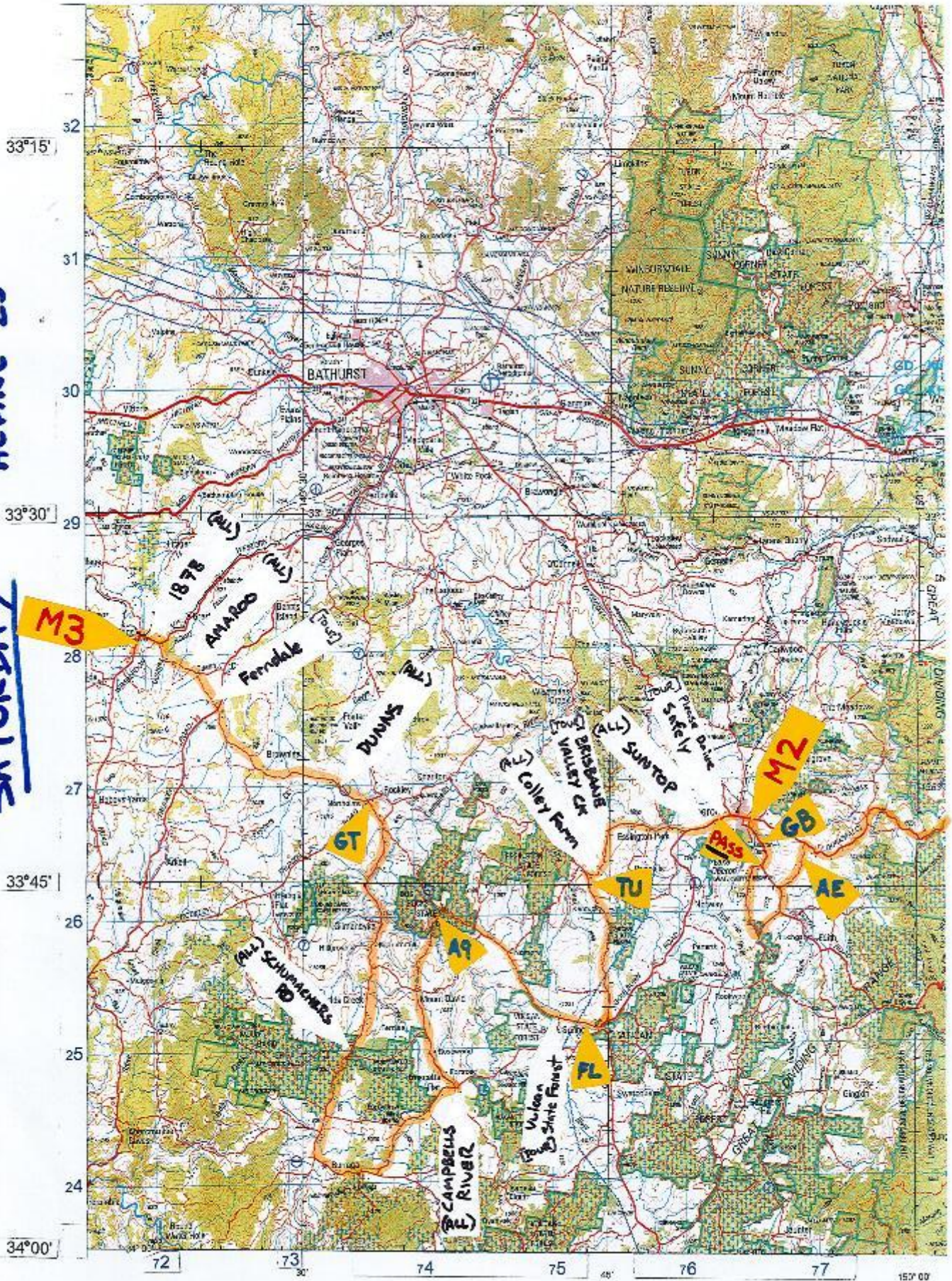
SCALE 1:250 000

Kilometres 0 5 10 15 20 25 30 35 40 45 50 Kilometres

BATHURST REGION 1/250,000

ALPINE '25

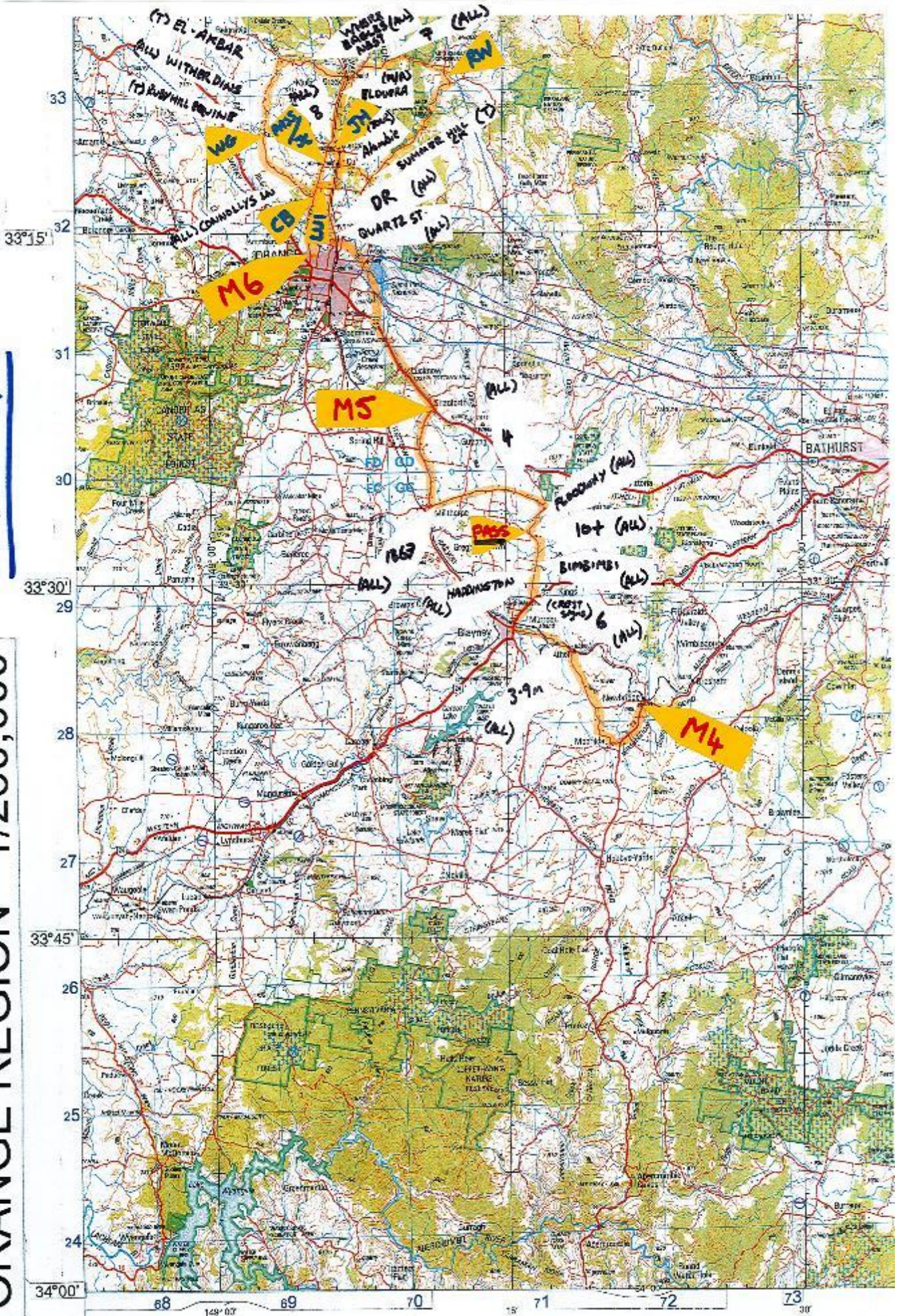
SATURDAY



ALPINE '25

SATURDAY

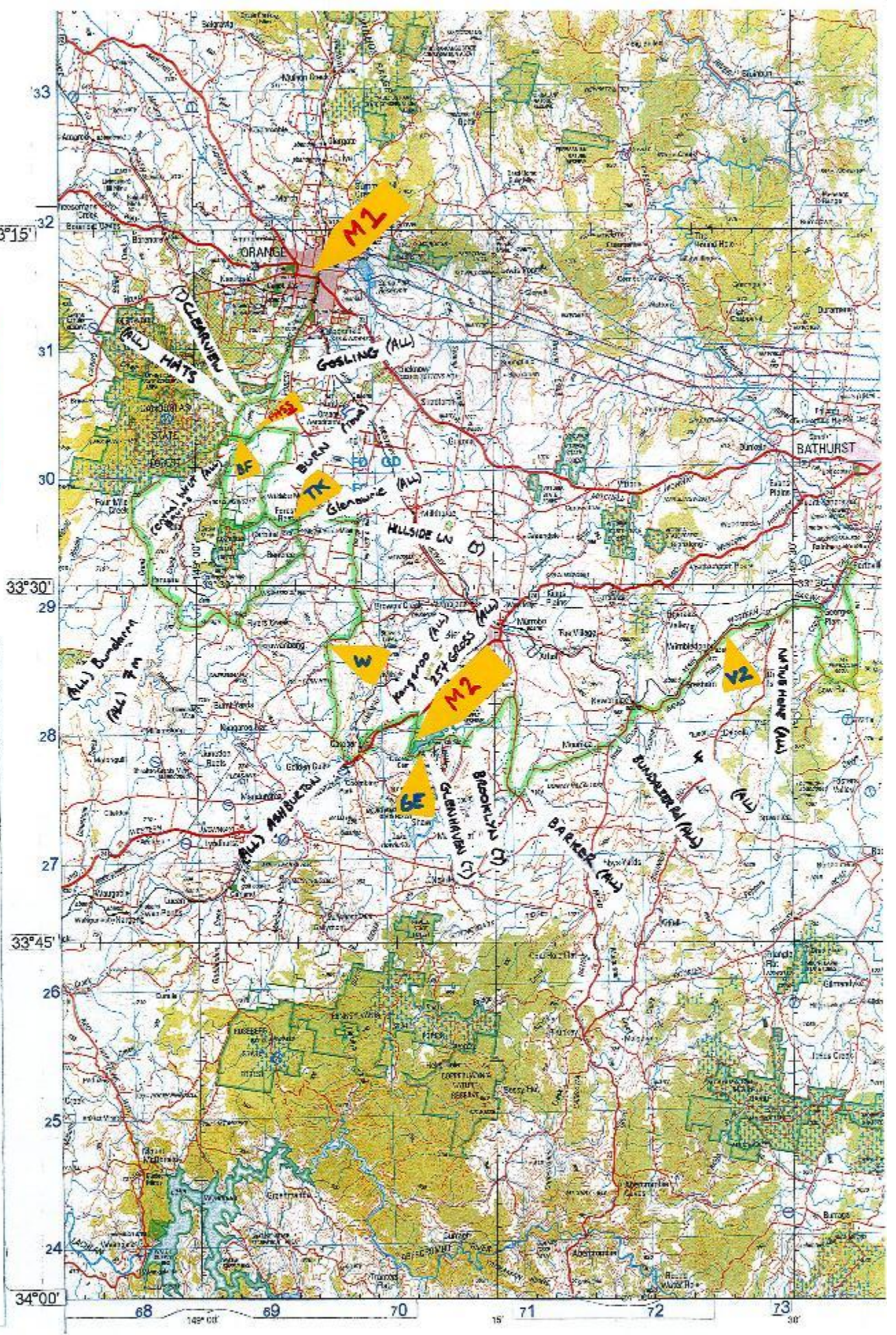
ORANGE REGION 1/250,000



ALPINE '25

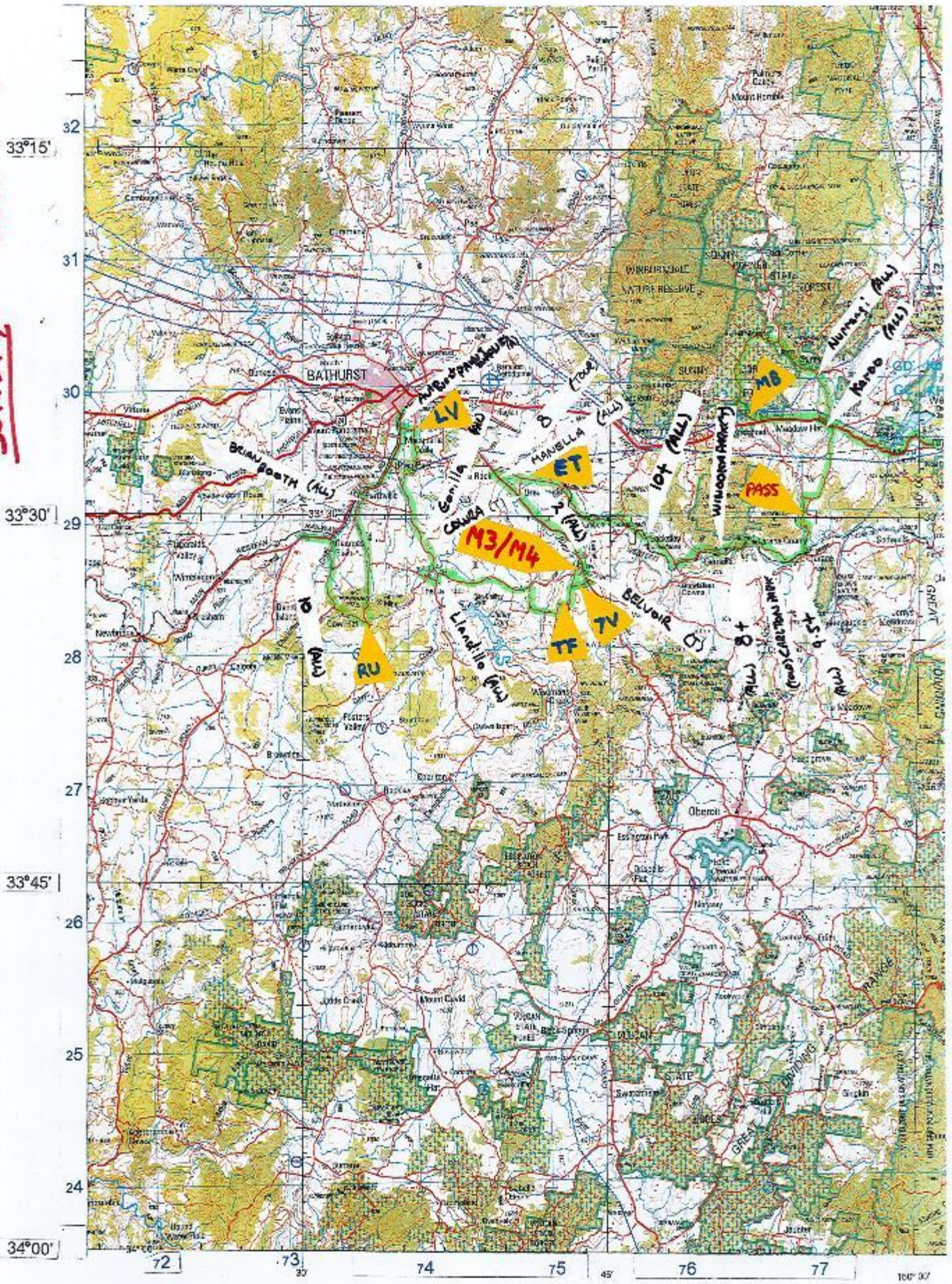
SUNDAY

ORANGE REGION 1/250,000



BATHURST REGION 1/250,000

ALPINE '25
SUNDAY



LITHGOW REGION 1/250,000

SUNDAY

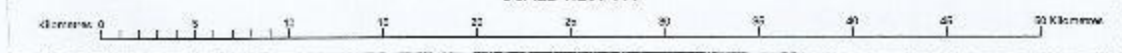
ALPINE '25

Legend

Dual carriageway; Distance in kilometres.....	
Principal road; Locality; Built-up area.....	
Secondary road; Bridge; Causeway.....	
Minor road (access & condition not assured).....	
Vehicle track (access & condition not assured).....	
Route marker: National, State.....	
Gate; Stock grid.....	
Embankment; Cutting.....	
Landing ground; Airport; Heliport.....	
Multiple track railway; Station or siding.....	
Single track railway; Bridge; Tunnel.....	
Powerline (110 kV and over).....	
Homestead; Building/s; Ruin.....	
Chimney; Silo; Tower.....	
Fence; Levee; Open cut mine.....	
Mine; Windpump; Yard.....	
Contour with value; Depression contour.....	
Horizontal control point; Spot elevation.....	
Sand; Sand dunes.....	
Sand ridges; Pinnacle; Cliff.....	
Forest, wood or shrub land: Rainforest.....	
Plantation; Urban recreation parkland.....	
Orchard or vineyard; Windbreak.....	
Bore or well; Spring; Tank or small dam.....	
Watercourse (presence of water not implied).....	
Subject to inundation; Swamp.....	
Lake: Perennial, Non-perennial; Waterhole.....	
Wreck; Submerged, bare or awash.....	
Foreshore flat; Lighthouse.....	
Shoal; Tidal ledge or reef; Mangrove.....	
Rock: Submerged, bare or awash; Breakwater.....	
Jetty or pier; Wharf; Saline coastal flat.....	
State or Territory border.....	
Reserved area boundary.....	
Prohibited area boundary.....	



SCALE 1:250 000



CLASSIC RALLY CLUB
SECRETARY'S 2025 ANNUAL REPORT

The Club has no current issues with bad debts, insurance claims or legal action, and is in a sound financial position. The Club's liability insurance is current and we continue to affiliate with Motorsport Australia and the Council of Motor Clubs.

The venue for the monthly meetings was moved to the Canada Bay Club in October last year, after the previous venue imposed fees which were unaffordable for our Club. The meeting room has good audio-visual facilities; the bistro's food is good and the club is open until late, so that attendees can socialise after meetings. Hire of the room costs \$200 per meeting, which was offset only partially by the increase of \$10 per Family and Individual memberships approved by last year's annual general meeting.

This year, the Club has worked on providing remote access to our monthly meetings via the Zoom videoconferencing application. Videoconferencing is straightforward when all participants have their own device or a group of people sit at one table, with a suitable conference microphone, but finding a sound setup suitable for our meetings has proven difficult. We are continuing to try different solutions.

Some of the critical functions of our Club currently can be performed only by a single person. In particular, we have no alternative arrangements to administer memberships or to update the Club website should the responsible office bearer be unavailable. Online membership management systems offer secure online storage of our data, more automated administration of aspects of the club, and will enable the committee to authorise administrative access for an alternative to an office bearer. Members will be able to renew their memberships and enter events online. Your committee has been investigating the systems being used by other clubs.

Such a system will assist your committee to promote the club more effectively and to attract more members to the Club and more entries to our events. Expect to hear our recommendations in the new year.

Glenn Evans

Secretary

Classic Rally Club Inc.
Minutes of the General Meeting
Held at the Canada Bay Club on 28 October 2025

Present:	Alan Walker	President
	Peter Reed (via Zoom)	Treasurer
	Geoff Bott	Committee Member
	Ron Cooper	Committee Member
	John Cooper	CMC Delegate
	Frank Brookhouse (via Zoom)	
	Edul Dhondy	
	John Henderson	
	Brian Madigan	
	Paul Morton	
	Tony Norman	
	Robbie Panetta	
	Kevin Payne	
	Peter Thomson	
	Stephen Wells	
	David Wigley	
	Greg Yates (via Zoom)	
	Len Zech	
	Glenn Evans	Secretary

Apologies:	Chris McDonald	Editor
	Mike Batten	
	Wendy Cooper	
	Andrew Inglis	
	Tony Kanak	
	Greg Lemmon	
	Lui MacLennan	
	Bob Morey	
	Garth Taylor	
	Lauren Walker	
	Kim Warner	
	Ross Warner	
	Tony Wise	
	Karen Yates	

Item 1: Opening

The President opened the meeting at 7:40pm.

Item 2: President's Report

The President reflected on the successful 25th Alpine Classic; the third year he has been its' Clerk of Course and leading the organising team. He thanked all the officials for ensuring that the event ran smoothly.

The President read Gerry Both's note of thanks to all the CRC members who attended Carol's funeral and sent their condolences.

The President noted the passing of Margaret Brown who, with her late husband, Don, was made a Life member in 2003. She served for many years as the CAMS steward for the early Alpine Classics.

Item 3: Secretary's Report

The Secretary reported that Kevin Payne has advised that Club member Stephen Martin also passed recently. Kevin introduced Stephen to the Club and Stephen relished the opportunities which events presented for him to drive his Porsche 944 on NSW's regional roads.

The Secretary welcomed new member, Frank Brookhouse, who is attending the meeting via Zoom. We are continuing to try different setups with the laptop and the meeting room's audio-visual system to enable all participants to see and hear each other.

Your committee continues to investigate membership management software packages. Membership and HVP renewals will be processed via the existing database this year. HVP data has been uploaded to the database and HVS participants will receive all their cars listed in one renewal, just as all the members of a Family membership are listed on the one membership renewal. The President advised that the contenders favoured at this time are the mycco package, as used by AROCA, and Revolutionise Sport, which is used by a car club of which Peter Reed is a member. The feedback from AROCA NSW is that mycco is responsive to requests for improvements and additional features. Peter Reeed undertook to speak to the person who uses the Revolutionise Sport system at his local car club.

Item 4: Treasurer's Report

The Treasurer presented the financial report for October, and this is attached. Currently, the Alpine Classic is \$7484 in surplus, although not all costs have been presented for payment.

Item 5: Membership Report

The Membership Secretary reported that the Club currently has 330 members, with a Family of two joining recently.

Item 6: HVP Report

The HVP Registrar reported that the number of Club cars on HVS registration is 78, and increase of one this month, and another six cars are on CVS registration. The new addition is Dennis Oste's Fuji Rabbit motorcycle. Another three cars are in the process of being registered through the Club and there have been a couple more enquiries.

The next Gear date is 3 December at One Raceway at Wakefield Park.

Transport for NSW has revised its requirements for fitness to drive assessments for persons over 75 years of age. Notably, increased time will be allowed to obtain medical assessments.

Item 7: Past Events

The recent Alpine Classic was discussed. The President thanked Geoff and Trish Mills, the sweeps, for their roadside repair of a puncture to Jen Navin's Porsche. Positive feedback was received, particularly from first time competitors.

Item 8: Future Events

Christmas Party and Awards Presentation Function. The end of year function will be held on Sunday, 14 December 2025. The venue will be different but the same caterers will be used. Details are in the October issue of Rally Directions.

2026 Shoalhaven Sojourn. The Shoalhaven Sojourn will be run on Saturday, 28 February 2026. Tony Norman has issued Bulletin No 1, which will be circulated in Rally Directions and via e-mail. In particular, Tony is looking for additional control officials.

The supplementary regulations are awaiting approval by Motorsport Australia. MA expressed concern that the event will be too early in the year for the changes in the 2026 National Touring Standing Regulations (NTSR) (to be issued in January) to be implemented, and suggested that the event be delayed until March. Tony anticipates that he will be able to incorporate any changes before the current scheduled date.

There was considerable discussion of MA's failures to be responsive to the requirements of its grassroots member clubs. The President stated that affiliating with Australian Auto Sport Alliance (AASA) and running events under it would require the CRC to write the equivalent of the MA NTSR as it currently does not run the equivalent of Navigation Assemblies. As an event director, he would want to be confident in AASA's liability coverage for such events if the Club were to have it sanction our events.

The President (still acting as Event Secretary) advised that the 2026 event calendar will be published in next month's Rally Directions.

Item 9: General Business

The recent CMC meeting was told that members of another club were booked by NSW Police for not filling in their logbooks when they were participating in an official club event. The infringements ultimately were overturned in court but the loss of demerit points could not be reversed. The Classic Rally Club recommends that the log book be filled in every time the vehicle is used, even for Club events, to ensure that there will be no issues with NSW Police.

The President advised that he will be nominating himself for another term at the AGM, as will the Secretary and Treasurer. We seek nominations for the vacant Event Secretary position and for ordinary committee members.

The President advised that the committee is considering revising the championship pointscore system. The importance of classic vehicles will be maintained. Encouragingly, 26 of the field of 37 cars in the Alpine Classic were classic vehicles.

Geoff Bott's tribute video to Carol Both was played.

Curious Jag's production of the 2025 Alpine Classic was given its world premiere.

(Note: The Secretary apologises to Zoom attendees for forgetting to share his screen when the videos were played and reports were displayed on the meeting room screens.)

Item 10: Closure

The President closed the meeting at 9:30pm.

Alan Walker
President

Glenn Evans
Secretary

CRC CHAMPIONSHIP POINT SCORE 2025

Masters Drivers						
	Round 1	Round 2	Round 3	Round 4		
	Ire of Man	Tour d'Course	Sheep Station	Alpine Classic		
	2 day	1 day	1 day	2 day	Points to date	Position to date
Competitor						
Andrew Inglis	36	18	20	40	78	1
Graham Pettit	36	0	18	38	74	2
David Stephenson	40	18		30	73	3
Edul Dhondy	38 (m)	19	19 (m)	32	73	3
Rob Panetta	30	17	17	36	70	5
David Shaw	34	20		32	70	5
Peter Jakrot				28 (m)	28	7

Masters Navigators						
	Round 1	Round 2	Round 3	Round 4		
	Ire of Man	Tour d'Course	Sheep Station	Alpine Classic		
	2 day	1 day	1 day	2 day	Points to date	Position to date
Competitor						
Martin Leaver	36	18	20	40	78	1
Alan Walker	38 (m)	19	19 (m)	36	75	2
Phill Stead	36		18	38	74	3
Mike Stephenson	40	18		30	73	4
Ray Arthurs	34	20	0	32	70	5
John Henderson			17	36	53	6
Jeff West				34	34	7
Valerie Jakrot				28 (m)	28	8
Ross Warner	0	17	0		17	9

CRC CHAMPIONSHIP POINT SCORE 2025

Apprentices Drivers						
	Round 1	Round 2	Round 3	Round 4		
	Ire of Man	Tour d'Course	Sheep Station	Alpine Classic		
	2 day	1 day	1 day	2 day		
Competitor					Points to date	Position to date
Bruce Miller	28	15	15	28	58	1
Michael Brandt	24 (m)			24	48	2
Geoff Bott	14	11		24	42	3
Murray Baker	16			22	38	4
Justin Bedingfield		0		30 (m)	30	5
Bob Morey	26 (m)	12 (m)	9 (m)		26	6
Helen Oste	20 (m)	13 (m)	10 (m)	4 (m)	23	7
Joyce Lawrence	22 (m)		8 (m)	0	22	8
Marina Thiveos		14 (m)			14	9
John Croft			13		13	10
Jonathan Loosli			12 (m)		12	11

Apprentices Navigators						
	Round 1	Round 2	Round 3	Round 4		
	Ire of Man	Tour d'Course	Sheep Station	Alpine Classic		
	2 day	1 day	1 day	2 day		
Competitor					Points to date	Position to date
Andrew Taurins	28	15	15	28	58	1
Lauren Walker	30			26	56	2
Nikki Baker	16			22	38	3
Glenn Evans	14	8.5	11	0	33.5	4
Mark Tolhurst				30 (m)	30	5
Teresa Morey	26 (m)	12 (m)	9 (m)		26	6
Marina Thiveos	24 (m)				24	7
Andrezy Cieslak				24	24	7
Toby Oste	20 (m)	13 (m)	10 (m)	4 (m)	23	9
Michael Brandt		14 (m)			14	10
Annette Croft			13	0	13	11
Helen Loosli			12 (m)		12	12

CRC CHAMPIONSHIP POINT SCORE 2025

Tour Drivers						
	Round 1	Round 2	Round 3	Round 4		
	Ire of Man	Tour d'Course	Sheep Station	Alpine Classic		
	2 day	1 day	1 day	2 day		
Competitor					Points to date	Position to date
Steven Davis	18			20	38	1
Doug Barbour	20 (m)		8	14	35	2
Dennis Oste	13	5.5	10	12 (m)	29	3
Greg Yates	10			18	28	4
Michael Malgo	6 (m)		8	16	27	5
Stephen Annabel	16				16	6
Frances Stephenson	13 (m)				13	7
Shaneen Dhondy		5.5 (m)	6 (m)		11.5	8
Greg Newton				10	10	9
Greg Lemmon	0	8.5			8.5	10
Warren Herrick			8		8	11
Chris McDonald	8 (m)			0	8	11
Chris Batty				8	8	11
Steve Barker				6	6	14
Tony Wise		5.5		0	5.5	15
Ryan Shaw	4 (m)				4	16
Brian Doyle			3 (m)		3	17
Bernard Corbett				2 (m)	2	18
Geoff Hemsall		1 (m)			1	19

Tour Navigators						
	Round 1	Round 2	Round 3	Round 4		
	Ire of Man	Tour d'Course	Sheep Station	Alpine Classic		
	2 day	1 day	1 day	2 day		
Competitor					Points to date	Position to date
Rochelle Prattley	18			20	38	1
Xanthea Boardman	20 (m)		8	14	35	2
Anthony Oste		5.5	10	12 (m)	27.5	3
Geoff Hemsall	6 (m)		8	16	27	4
Tim Mcgrath				18	18	5
Jayne Annabel	16				16	6
Karen Yates	10				10	7
Paul Kuper				10	10	7
James Achilleos		8.5			8.5	9
Jen Navin		8.5		0	8.5	9
Glenda Lawrence			8		8	11
Phil Lindsay				8 (m)	8	11
Simone Dhondy			6		6	13
Sally Barker				6	6	13
Chris McDonald		5.5		0	5.5	15
Nina Dhondy		5.5 (m)			5.5	15
Shelly Shaw	4 (m)				4	17
Louise D'Arcens			4		4	17
Madelon Corbett				2 (m)	2	19
Fiona Hemsall		1 (m)	0		1	20

Conditional Registration of Historic Vehicles

For all enquiries regarding club plates please contact

Ron Cooper CRC Club Plates Registrar

rondcooper1275@gmail.com Mobile 0403 037 137

49 Wongawilli Rd Wongawilli NSW 2530

The scheme is designed to allow historic vehicles (more than 30 years old) to be registered under conditional registration which provides limited usage of the vehicle and also provides Compulsory Party insurance cover both at a very reduced cost. The Classic Rally Club is very grateful to the RMS and relevant Minister for the scheme which allows the preservation of historic vehicles for road use without incurring the cost of full registration and insurance. The scheme works very well so long as it is not abused; it is not intended for day to day driving such as driving to work, going shopping, commuting to the railway station or driving the kids to school. The introduction of the 60 day log book trial allows members to enjoy 60 days use of the car for driving sake. The Classic Rally Club will not tolerate any abuse of the scheme by club members.

Types of Conditional Registration available to CRC members

- 1 Historic Vehicle Registration H Plates (HVS) 60 day log book which allows 60 days per year use plus club events. This is an accord between the RMS and individual car clubs. An annual signature and club stamp required to ensure you are a financial member of the CRC RMS Form for HVS 1259
- 2 Classic Vehicle Registration (CVS) similar to above but with modification allowed provided they are certified by and engineer's report. This is an accord between RMS and the CMC /ACMC An annual club RMS form for CVS 1835
- 3 Rally Registration for outright rally cars, note this is the only way cars with full roll cages can be registered in NSW.

When your renewal with the RMS falls due, they will send you a new Historic Vehicle Declaration form. You MUST have that form signed by the Club Plate Registrar, so allow enough time for this to be done before your registration falls due.

Procedure for renewing at the RMS:

- **Get a pink slip. The preferred option**
You need to send a copy of the pink slip to me.
- **A return stamped address envelope would be appreciated.**
- **Fill in the Historical Vehicle Declaration and mail to me email copies not permitted by RMS alternatively you can complete the writeable PDF from RMS site and that can be emailed to me but it needs to be posted back**
- **Club Plates Registrar will complete Section 4. and sign**
- **Take or send your Conditional Registration renewal and pink slip to RMS or Services NSW for processing.**

Don't forget that all movements of your car, other than those set out in the constitution, must be logged with the Club Plates Registrar or logged in your logbook if your car is on the 60 day scheme to ensure your CTP insurance is valid. To log in vehicles not on the 60 day scheme contact me on mobile 0403 037 137 or email rondcooper1275@gmail.com.

Club Rules in addition to RMS Conditions

The scheme is designed for Classic Rally Club members who will be active in club events not just to provide cheap registration as per the overview of the scheme.

The club reserves the right to withdraw eligibility to those do not participate in club activities.

Members should be financial members for 12 months prior to applying for club plates.

Members with club plates must comply with all RMS conditions and club rules and directions from club officials.

The club reserves the right to accept or reject any cars and to withdraw acceptance to the Historic and Classic Plate schemes.

In addition to the RMS costs the Classic Rally Club will charge members on the HVP scheme \$25 per year and require them to sign a document annually requiring members to agree to the conditions of the scheme and to provide information on the insurance of their vehicles.